

实验室简介

Eurofins TA成立之初便具备了SAR测试能力，是国内最早开展SAR测试实验室之一，在行业内富有很高的知名度。SAR实验室是运营商Vodafone的认可实验室。为了帮助客户产品顺利打入美洲市场，于2009年初开展了助听器兼容性测试的HAC测试项目。我们致力于客户服务的原则，研究国内外相关标准，为客户提供高效便捷的SAR和HAC认证测试及咨询服务。

服务产品领域

移动通信设备：手机、USB数据卡、电子阅读器、笔记本电脑、平板电脑、智能手表等
专业通信设备：对讲机等
无线接入设备：无线路由器等

测试设施

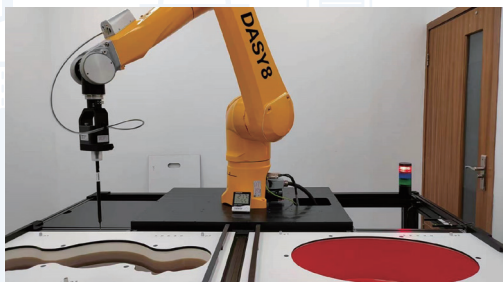
三套DASY5 SAR测量系统
一套DASY8 SAR测量系统
CSAR 测试系统
HAC RF&T-coil测试系统

测试能力

GSM/GPRS/EGPRS/DTM
CDMA/1XRTT/EVDO REV.0/ REV.A/ REV.B/ REV.D/1X Advance
WCDMA/HSDPA/HSUPA/HSPA+/DC-HSDPA,TD-SCDMA
TDD-LTE/FDD-LTE,5G NR SA,NSA
802.11 b/g/n/ax/be,802.11a/n/ac/ax/be, Wi-Fi6E, BT
2G/3G/4G(Vo-LTE)/Vo-Wi-Fi2.4G/Vo-Wi-Fi5G HAC RF&T-Coil
2G/3G/4G(Vo-LTE)/Vo-Wi-Fi2.4G/Vo-Wi-Fi5G/5G OTT
IEC/EN 62232/62479/62209/62311
BS EN /EN 50385/50360/50566
EN IEC/IEEE 62209-1528(Include Qualcomm Smart Transmit Test Ability)
RSS-102,SPR-001,SPR-002
ANSI C63.19, RSS-HAC, etc.

业务范围

FCC认证测试、CE认证测试、IC认证测试、Vodafone认证测试、RCM认证测试、印度认证测试、泰国认证测试、KC认证测试、香港OFCA认证测试、UK认证测试、CTA入网预测试、NCC预测试、巴西、墨西哥等拉美国家预测试。



您可信赖的合作伙伴!全球认证及测试服务供应商

电话：021-50791141/42/43
邮箱：service@ta-shanghai.com
地址：上海市浦东新区金唐路145号3幢

深圳办事处
广东省深圳市宝安区新安街道大宝路83号美生慧谷
创新园春谷2栋

Lab Introduction

Eurofins TA lab has SAR testing capability in early period of established, it becomes the one of earliest SAR testing laboratory, and we have a rich high visibility in the industry. We gained the approval of Vodafone. Eurofins TA developed hearing aid compatibility test in 2009 to perform pretest and certification test. We adhere to principles of customer service, so we research standards of domestic and international, to provide efficient and convenient SAR&HAC certification testing and consulting services for customer.

Tested Product

Mobile communication equipment: phone, USB dongle, e-book, laptop, tablet, smart watch ,etc.
Professional communication equipment: Two way radio (PTT) ,etc.
Wireless access equipment: Wireless router ,etc.

Test System

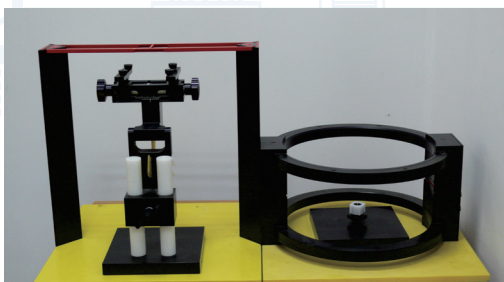
Three DASY5 test systems
One DASY8 test systems
CSAR test systems
HAC RF&T-coil test systems

Test Ability

GSM/GPRS/EGPRS/DTM
CDMA/1XRTT/EVDO REV.0/ REV.A/ REV.B/ REV.D/1X Advance
WCDMA/HSDPA/HSUPA/HSPA+/DC-HSDPA ,TD-SCDMA
TDD-LTE/FDD-LTE ,5G NR SA,NSA
802.11 b/g/n/ax/be, 802.11a/n/ac/ax/be, Wi-Fi6E,BT,
2G/3G/4G(Vo-LTE)/Vo-Wi-Fi2.4G/Vo-Wi-Fi5G HAC RF&T-Coil
2G/3G/4G(Vo-LTE)/Vo-Wi-Fi2.4G/Vo-Wi-Fi5G/5G OTT
IEC/EN 62232/62479/62209/62311
BS EN /EN 50385/50360/50566
EN IEC/IEEE 62209-1528(Include Qualcomm Smart Transmit Test Ability)
RSS-102 ,SPR-001,SPR-002
ANSI C63.19, RSS-HAC ,etc.

Business Scope

FCC certification test, CE certification test, IC certification test, Vodafone certification test, RCM certification test, India certification test, Thailand certification test, KC test, OFCA test,UK certification test, CTA pre-test, NCC pre-test, Latin American countries (Brazil, Mexico,etc.) pre-test.



Tel:021-50791141/42/43
Mail:service@ta-shanghai.com
Add:Building 3, No.145, Jintang Rd, Pudong
Shanghai

Building 2, Spring Block, Meishenghuigu
Innovation Park, No.83, Dabao Rd, Bao'an
District, Shenzhen, Guangdong

实验室简介

Eurofins TA蓝牙实验室使用Bluetooth SIG授权的测试工具，为客户提供各类蓝牙产品Bluetooth SIG认证测试服务。具有蓝牙功能并在产品外观上使用蓝牙标志的产品，必须通过Bluetooth SIG认证。Bluetooth SIG负责检查不符合规范的声明和文档，评价产品测试报告，在蓝牙授权产品的官方数据库中列出产品。Eurofins TA实验室已是Bluetooth SIG授权的BQTF之一。

服务产品领域

模块，芯片，终端产品
Bluetooth SIG认证产品包括所有使用蓝牙技术作为连接方式的产品，具体如：蜂窝式电话、平板、电脑、手机、耳机、智能手环、手表、多功能外设等。

测试设施

Bluetooth SIG授权的射频测试系统：Interlab Test Solution Bluetooth RF
PTS配置文件测试系统
蓝牙互操作样品库

测试能力

射频一致性测试:普通蓝牙和低功耗蓝牙的输出功率，功率密度，功率控制，频带范围，20dB占用带宽，邻信道功率，调制特性，初始载波频率容限，载波频率漂移，带内杂散辐射，灵敏度测试，最大输入电平，C/I性能，阻塞特性，互调特性等,目前支持到BT5.4
协议一致性测试: AVCTP, AVDTP, BNEP, RFCOMM
配置文件一致性测试: A2DP, AVRCP, BIP, BPP, DUN, FTP, GAVDP, HCRP, HFP, HID, HSP, HOGP, MAP, OPP, PAN, PBAP, PXP, SAP, SCPP, SPP, VDP 等
互操作测试
蓝牙吞吐量测试

业务范围

Bluetooth SIG联盟认证测试
客户研发测试



您可信赖的合作伙伴!全球认证及测试服务供应商

电话: 021-50791141/42/43
邮箱: service@ta-shanghai.com
地址: 上海市浦东新区金唐路145号3幢

深圳办事处
广东省深圳市宝安区新安街道大宝路83号美生慧谷
创新园春谷2栋

Lab Introduction

Eurofins TA Bluetooth Lab provides Bluetooth SIG certification testing services for Bluetooth products using Bluetooth SIG authorized test tools. A product which has Bluetooth function and has Bluetooth logo printed on packaging, is required to pass Bluetooth SIG certification. Bluetooth certification group (Bluetooth SIG) is responsible for checking illegal statements and documents, evaluating product test report and listing Bluetooth licensed products in the official database. Eurofins TA Lab is already one of the BQTFs authorized by Bluetooth SIG.

Tested Product

The EUT under Bluetooth SIG Certification include any kind of product which used the Bluetooth technology as the connection method, such as: Cellular Phone, Pad, Mobile Phone, Earphone, Smart Bracelet, Watch, Multifunction Equipment.

Test System

Bluetooth RF test system : Interlab Test Solution Bluetooth RF
Bluetooth Profile test tool
Bluetooth Interoperability test tool

Test Ability

Eurofins TA Bluetooth Test can satisfy the Bluetooth SIG core V5.4 certification test RF Testing for General Bluetooth and Low Energy Bluetooth: Output Power, PSD, Power Control, Frequency Range, 20dB Bandwidth, ACP, Mod Char, ICFT, Carrier Frequency Drift, In-band Spurious Emission, Sensitivity, Max Input Level, Intermodulation performance. The system can support BT5.4
Protocol Conformance Test: AVCTP, AVDTP, BNEP, RFCOMM
Profile Conformance Test: A2DP, AVRCP, BIP, BPP, DUN, FTP, GAVDP, HCRP, HFP, HID, HSP, HOGP, MAP, OPP, PAN, PBAP, PXP, SAP, SCPP, SPP, VDP, etc. Interoperability Test
Bluetooth throughput test

Business Scope

Bluetooth SIG certification test
R&D test



Tel:021-50791141/42/43
Mail:service@ta-shanghai.com
Add:Building 3, No.145, Jintang Rd, Pudong
Shanghai

Building 2, Spring Block, Meishenghuigu
Innovation Park, No.83, Dabao Rd, Bao'an
District, Shenzhen, Guangdong

实验室简介

Eurofins TA EMC实验室是具有FCC、IC、CE、VCCI、UKCA和RCM等资质的专业检测认证实验室，覆盖所有基础EMC测试项目，实验室的测试系统由德国著名的R&S公司负责提供，具备有全套的EMC测试软件；而实验室内的整套EMS设备是由瑞士EM TEST厂商提供，性能稳定，数据准确。

服务产品领域

无线基站、直放站及其辅助设备、移动台及辅助设备（2G/3G/4G/5GNR/NB-IoT/eMTC，Wi-Fi 2.4G/5G/6G，SRD）、无人机设备、智能家居设备、电信设备、多媒体设备、工科医设备、电气照明类设备、家用电器、电动工具类设备、测量、控制和实验室用电气设备、安防报警系统、不间断供电设备、DC电源供电单元、低电压电子系统电气设备、专业音频、视频、音视频和娱乐场所灯光控制设备、轨道交通设备、大型工业设备、大型IT设备、医疗器械、汽车电子设备等。

测试设施

1座10米法电波暗室（配置5米直径转台，承重5吨，采用X射线屏蔽）
5座3米法电波暗室、六座屏蔽室
全套单相电、三相电和直流电传导、辐射R&S EMI测试系统
全套单相电、三相电和直流电传导、辐射R&S EMS测试系统

测试能力

无线电通信产品的杂散测试和EMC相关测试(FCC Part15、Part22/24/25/27/90、EN300328、EN301893、EN301489 series、etc.)
电信设备(EN 300386、EN201468、etc.)
IT设备(FCC Part 15B、GB/T 9254.1、GB/T 9254.2、RSS-Gen、VCCI-CISPR 32、ICES-003、AS/NZS CISPR32)
工科医设备 (EN55011、BS EN 55011、GB 4824、ICES-001、FCC part18、etc.)
医疗器械 (YY 0505、YY 9706.102、EN 60601-1-2、BS EN 60601-1-2、etc.)
照明类设备 (EN55015、EN 61547、BS EN IEC 55015、BS EN 61547、GB 17743、ICES-005、etc.)
家电和电动工具设备(EN55014-1/2、BS EN 55014-1/2、GB 4343.1/2、AS/NZS CISPR 14.1、etc.)
测量、控制和实验室用电气设备 (EN 61326-1、EN 61326-2、series、etc.)
安防报警系统 (EN 50130-4、BS EN 50130-4等产品的EMC测试项目)
不间断供电系统(UPS)(EN IEC 62040-2、BS EN IEC 62040-2)
多媒体设备 (EN55032、AS/NZS CISPR32、EN55035、etc.)
汽车电子设备(ISO 7637-2、GB/T 21437.2)
轨道交通设备 (EN 50121-3-2、GB/T 24338.4、etc.)

业务范围

CTA预测测试、CCC预测测试、巴西ANATEL预测测试
VCCI认证、CE认证、FCC认证、IC认证、TELEC认证、RCM认证、UKCA认证
RF和EMC研发测试



您可信赖的合作伙伴!全球认证及测试服务供应商

电话: 021-50791141/42/43
邮箱: service@ta-shanghai.com
地址: 上海市浦东新区金唐路145号3幢

深圳办事处
广东省深圳市宝安区新安街道大宝路83号美生慧谷
创新园春谷2栋

Lab Introduction

Eurofins TA EMC laboratory is a professional testing and certification laboratory with qualifications of FCC, IC, CE, VCCI, UKCA and RCM, covering all basic EMC testing items. The testing system of the laboratory is provided by the famous German R&S company. A full set of EMC test software; and all EMS equipment in the laboratory is provided by the swiss EMTEST manufacturer, with stable performance and accurate data.

Tested Product

Wireless base stations, repeaters and their auxiliary equipment, mobile stations and auxiliary equipment (2G/3G/4G/5G NR/NB-IoT/eMTC, Wi-Fi 2.4G/5G/6G, SRD), drone equipment, smart household equipment, telecommunication equipment, multimedia equipment, engineering medical equipment, electrical lighting equipment, household appliances, electric tool equipment, electrical equipment for measurement, control and laboratory, security alarm system, uninterruptible power supply equipment, DC power supply unit, Low-voltage electronic system electrical equipment, professional audio, video, audio and video and lighting control equipment for entertainment venues, rail transit equipment, large industrial equipment, large IT equipment, medical equipment, automotive electronic equipment, etc.

Test System

One 10 meter EMC chamber (configured with a 5-meter-diameter turntable, bearing 5 tons, and X-ray shielding)
Five 3 meter EMC chambers
Six shielding chambers
A full set of single-phase, three-phase and DC power supply conduction, radiation
R&S EMI test systems
A full set of single-phase, three-phase and DC power supply conduction, radiation
R&S EMS test systems

Test Ability

Spurious test and EMC related test of radio communication products (FCC Part15, Part22/24/25/27/90, EN300328, EN301893, EN301489 series, etc.)
Telecommunications equipment (EN 300386, EN201468, etc.)
IT equipment (FCC Part 15B, GB/T 9254.1, GB/T 9254.2, RSS-Gen, VCCI-CISPR 32, ICES-003, AS/NZS CISPR32)
Engineering and medical equipment (EN55011, BS EN 55011, GB 4824, ICES-001, FCC part18, etc.)
Medical devices (YY 0505, YY 9706.102, EN 60601-1-2, BS EN 60601-1-2, etc.)
Lighting equipment (EN55015, EN 61547, BS EN IEC 55015, BS EN 61547, GB 17743, ICES-005, etc.)
Household appliances and power tools (EN55014-1/2, BS EN 55014-1/2, GB 4343.1/2, AS/NZS CISPR 14.1, etc.)
Measurement, control and laboratory electrical equipment (EN 61326-1, EN 61326-2, series, etc.)
Security alarm system (EN 50130-4, BS EN 50130-4, etc.)
Uninterruptible power systems (UPS) (EN IEC 62040-2, BS EN IEC 62040-2)
Multimedia equipment (EN55032, AS/NZS CISPR32, EN55035, etc.)
Automotive electronic equipment (ISO 7637-2, GB/T 21437.2)
Railway applications (EN 50121-3-2, GB/T 24338.4, etc.)

Business Scope

CTA pre-test, CCC pre-test, Brazil ANATEL pre-test
VCCI certification, CE certification, FCC certification, IC certification, TELEC certification, RCM certification
UKCA certification
RF and EMC R&D testing



Tel: 021-50791141/42/43
Mail: service@ta-shanghai.com
Add: Building 3, No.145, Jintang Rd, Pudong
Shanghai

Building 2, Spring Block, Meishenghuigu
Innovation Park, No.83, Dabao Rd, Bao'an
District, Shenzhen, Guangdong

实验室简介

Eurofins TA OTA实验室多年从事OTA认证测试，目前是CTIA, CWG和GCF授权实验室，同时还是运营商Vodafone的授权实验室，能够出具Vodafone认可的测试报告。也是其他运营商，包括 CMCC/AT&T/Altice/Optus等的合作伙伴，为客户提供快速、准确的认证测试。

服务产品领域

手持设备：手机
内置数据设备：笔记本电脑、平板电脑、无线打印机、无线路由器等无线通信产品
外插式数据设备：USB数据卡等无线通信产品
无源器件：天线

测试设施

SISO OTA: ETS-LINDGREN AMS 8500 系统
Agilent、R&S、Anritsu 等测试仪表
Speag人头人手模型

测试能力

覆盖 2G/3G/4G/Wi-Fi(802.11a/b/g/n/ac/ax)有源测试项
总辐射功率或有效全向辐射功率
总辐射灵敏度或有效全向辐射灵敏度
中间信道相对灵敏度或是自干扰
700MHz-6GHz无源测试项
增益或效率
驻波比、天线方向图
相关系数
互扰测试项:多模互扰测试

业务范围

CTIA&PTCRB认证测试
CWG认证测试
GCF认证测试
Vodafone认证测试

中国移动入库认证预测试
中国电信入库预测试
CTA入网预测试
天线性能相关测试



您可信赖的合作伙伴!全球认证及测试服务供应商

电话: 021-50791141/42/43
邮箱: service@ta-shanghai.com
地址: 上海市浦东新区金唐路145号3幢

深圳办事处
广东省深圳市宝安区新安街道大宝路83号美生慧谷
创新园春谷2栋

Lab Introduction

Eurofins TA OTA Lab has been engaged in OTA certification testing for many years, we gained the approval of CTIA, CWG and GCF of OTA authorized. It is worth mentioning that the OTA lab is also Vodafone Authorized test lab, thus we could provide one stop service for Vodafone certification. It is also a partner with other operators, including CMCC/AT&T/Altice/Optus, to provide customers with fast and accurate certification testing.

Tested Product

Mobile communication equipment: phone
Internal data device: laptop, Tablet, wireless print, wireless router ,etc.
External data device: USB dongle ,etc.
passive device: Antenna

Test System

SISO OTA System:ETS-LINDGREN AMS 8500 OTA system
Agilent, R&S, Anritsu test device
Speag head and hand Phantoms

Test Ability

Cover 2G/3G/4G/Wi-Fi(802.11a/b/g/n/ac/ax)
TRP (Total Radiated Power)
TIS (Total Isotropic Sensitivity)
IC(Intermediate Channel) or SI (Self-Int Test)
700MHz-6GHz Passive
Gain or Efficiency
VSWR, radiation pattern
Antenna correlation
Interference:Inter-mode Interference

Business Scope

CTIA&PTCRB Certification
CWG Certification
GCF Certification
Vodafone Certification

CMCC pre-test
CTCC pre-test
CTA pre-test
Antenna performance test



Tel:021-50791141/42/43
Mail:service@ta-shanghai.com
Add:Building 3, No.145, Jintang Rd, Pudong
Shanghai

Building 2, Spring Block, Meishenghuigu
Innovation Park, No.83, Dabao Rd, Bao'an
District, Shenzhen, Guangdong

实验室简介

Eurofins TA RF实验室拥有符合FCC&CE&IC认证的测试系统，拥有丰富的国内入网和运营商入库的预测试经验，同时也是GCF授权实验室。RF测试系统具有灵活的case配置能力和强大的查错能力，可大幅度的提高客户debug的效率。

服务产品领域

无线通信设备：2G/3G/4G/5G/NB-IoT/eMTC终端设备及模块
无线接入设备：2.4GHz/4.9GHz/5GHz/6GHz Wi-Fi类产品、Bluetooth类产品、Zigbee、GNSS、UWB产品等
RF短距离传输设备：UH7/HF RFID读写器、POS机、NFC设备、玩具遥控器、无线MIC、遥测设备、遥控设备、数据传输设备、报警设备、智能车钥匙设备等

测试设施

GS-8800 GSM/WCDMA 测试系统
MW200 GSM/WCDMA 测试系统，MW500 LTE/5G NR测试系统2套
IOT0047A Wi-Fi6E 测试系统
TS8997 BT/Wi-Fi 测试系统 2套，FCC BT/Wi-Fi测试系统3套
FCC 2/3/4/5G测试系统2套，FCC eMTC/NB-IoT测试系统
Telec BT/Wi-Fi测试系统，Telec 3/4/5G测试系统
除拥有数十台常规的频谱仪、矢量信号源、模拟信号源和蜂窝综测仪之外，新增MT8000A综测仪、MT8821C综测仪、MT8862A综测仪、GSS7000卫星模拟测试仪、SP9500综测仪等多台新技术仪表。

测试能力

GSM/GPRS/EDGE/R-GSM
WCDMA/HSDPA/HSUPA CDMA IxRTT/EVDO.Rev.0/A
TD-LTE/LTE-FDD/eMTC/NB-IoT/5G NR SA/NSA/2x2 CA/2x2MIMO
Bluetooth, 802.11 a/b/g/n/ac/ax/be, Wi-Fi 6E, Lora, Zigbee, Zwave, GNSS,
UHF/HF RFID, NFC, E112, UWB

业务范围

CE/FCC/IC/OFCA/Telec等国际认证
CTA、SRRC、CE、FCC、KC、NCC、运营商、GCF、PTCRB预测试
客户研发测试



您可信赖的合作伙伴!全球认证及测试服务供应商

电话：021-50791141/42/43
邮箱：service@ta-shanghai.com
地址：上海市浦东新区金唐路145号3幢

深圳办事处
广东省深圳市宝安区新安街道大宝路83号美生慧谷
创新园春谷2栋

Lab Introduction

Eurofins TA RF lab as the authorization test lab for GCF test, satisfy the requirements of FCC&CE&IC certification. We have the test system suites for CTA and service provider defined cases. With flexible configurability and powerful error correction functions, Eurofins TA RF test system can largely improve the debugging efficiency for customers.

Tested Product

Radio communication devices: 2G/3G/4G/5G/NB-IoT/eMTC terminal and module
 Wireless access devices: 2.4GHz/4.9GHz/5GHz/6GHz Wi-Fi,Bluetooth,Zigbee,GNSS,UWB device,etc.
 Short range device: Walki-Talkie, UHF/HF RFID Reader/Writer, POS, NFC device, Toy Remoter, Wireless MIC alarms, indentification systems, radio- detecmination, telecommand,telemetry, Smart car key ,etc.

Test System

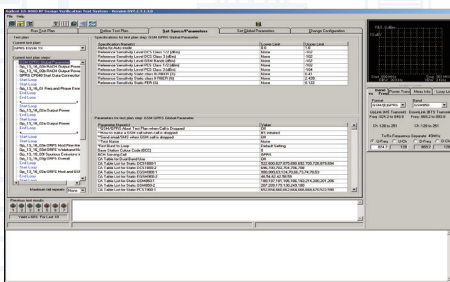
GS-8800 GSM/WCDMA Test System
 MW200 GSM/WCDMA Test System
 MW500 LTE/5G NR Test System x2
 IOT 0047AWi-Fi6E Test System
 TS8997 BT/Wi-Fi Test System x2 ,FCC BT/Wi-Fi Test System x3
 FCC 2/3/4/5G Test System x2,FCC eMTC/NB-IoT Test System
 Telec BT/Wi-Fi Test System ,Telec 3/4/5G Test System
 In addition to having dozens of conventional spectrum meters, vector signal sources, analog signal sources and cellular test device, we have added many new technology instruments such as MT8000A , MT8821C , MT8862A , GSS7000 , SP9500 wireless test device

Test Ability

GSM/GPRS/EDGE/R-GSM
 WCDMA/HSDPA/HSUPA CDMA 1xRTT/EVDO.Rev.0/A
 TD-LTE/ LTE-FDD/eMTC/NB-IoT 5GNR SA/NSA/2x2 CA/2x2 MIMO
 Bluetooth, 802.11 a/b/g/n/ac/ax/be,Wi-Fi 6E,Lora,Zigbee, Zwave, GNSS
 UHF/HF RFID, NFC, E112, UWB

Business Scope

International certification of CE/FCC/IC/OFCA/Telec, etc.
 Pre-test of CTA/SRRC/CE/FCC/KC/NCC/Operator/GCF/PTCRB
 R&D test



Tel:021-50791141/42/43
 Mail:service@ta-shanghai.com
 Add:Building 3,No.145, Jintang Rd, Pudong
 Shanghai

Building 2, Spring Block, Meishenghuigu
 Innovation Park, No.83, Dabao Rd, Bao'an
 District, Shenzhen, Guangdong

实验室简介

Eurofins TA是中国最早拿到Wi-Fi联盟授权的实验室之一，对Wi-Fi互操作性能进行测试，旨在帮助确保采用最新的Wi-Fi技术的产品来提供最佳的用户体验。当前实验室已经获得了24个Wi-Fi联盟授权资质能力，拥有多年的测试工作经验和国内领先的测试技术，可以给客户提供专业的测试和咨询服务。

服务产品领域

Wi-Fi 认证产品包括所有使用Wi-Fi技术作为连接方式的产品，具体如：蜂窝式电话、无线上网卡、路由器、音频设备、无线打印机、平板电脑、网络相机、Wi-Fi手机、DVD 播放器、多功能外设等。

测试设施

16间屏蔽室、其中2间为半电波暗室和30多个测试项目平台

WPA2、WMM、802.11n、802.11ac、PMF、Wi-Fi Direct、Passpoint、WPS2.0、WMM-PS、TDLS、Miracast、VOE、WMM-AC、MBO、Wi-Fi 6(包含Wi-Fi6E)、WPA3 R1、WPA3 R2、WPA3 R3、Enhanced Open、Easy Mesh R1、Easy Mesh R2、Easy Mesh R3、Easy Mesh R4、Easy Mesh R5、FFD、Quick Track (Indigo)、Wi-Fi6 R2、Qos Management R1、Qos Management R2

测试能力

核心技术：Wi-Fi CERTIFIED 802.11a/b/g/n/ac/ax、Wi-Fi Direct、WPA2、Protected Management Frames(PMF)、Wi-Fi CERTIFIED ac; WPA3、Wi-Fi6、MBO、Enhanced Open、FFD、Quick Track (Indigo)

性能优化：Wi-Fi Multi-Media(WMM)、WMM-Power Save(WMM-PS)、WMM-Admission Control、Tunneled Direct Link Setup(TDLS); Easy Mesh Qos Management

访问技术：Wi-Fi Protected Setup(WPS)、Passpoint、Wi-Fi Protected Setup

应用和服务：Miracast、Voice-Enterprise、Easy Mesh

业务范围

Wi-Fi联盟互操作认证测试
客户研发测试



您可信赖的合作伙伴!全球认证及测试服务供应商

电话：021-50791141/42/43

邮箱：service@ta-shanghai.com

地址：上海市浦东新区金唐路145号3幢

深圳办事处

广东省深圳市宝安区新安街道大宝路83号美生慧谷
创新园春谷2栋

Lab Introduction

Eurofins TA is one of the earliest labs authorized by the Wi-Fi Alliance in China to test Wi-Fi interoperability to help ensure that products using the latest Wi-Fi technology provide the best user experience. At present, ATL has obtained 24 Wi-Fi Alliance authorized qualifications, Also ATL has many years of testing work experience and domestic leading testing technology, and can provide customers with professional testing and consulting services.

Tested Product

Wi-Fi certified products include all of products with Wi-Fi technology, especially for devices just like: cellular, Wireless Card, router, Audio, Wireless Printer Server, Tablet PC, Wi-Fi Camera, Wi-Fi Phone, DVD Player, Multi-function Peripherals ,etc.

Test System

16 shielded rooms, 2 half-wave test suites and more than 30 test beds
WPA2, WMM, 802.11n, 802.11ac, PMF, Wi-Fi Direct, Passpoint, WPS2.0, WMMPS, TDLS、Miracast, VOE, WMM-AC, MBO, Wi-Fi6(include Wi-Fi6E), WPA3 R1, WPA3 R2, WPA3 R3, Enhanced Open, Easy Mesh R1, Easy Mesh R2, Easy Mesh R3, Easy Mesh R4, FFD, Quick Track (Indigo), Wi-Fi6 R2, Qos Management R1, Qos Management R2

Test Ability

Core Technology: Wi-Fi certified 802.11a/b/g/n/ac/ax, Wi-Fi Direct, WPA2, Protected Management Frames (PMF), Wi-Fi certified ac, WPA3, Wi-Fi6, MBO, Enhanced Open, FFD, Quick Track (Indigo)
Performance optimization: Wi-Fi Multi-Media (WMM), WMM-Power Save (WMM-PS), WMM-Admission Control, Tunneled Direct Link Setup (TDLS), Easy Mesh, Qos Management
Access: Wi-Fi Protected Setup (WPS), Passpoint, Wi-Fi Protected Setup
Services: Miracast, Voice-Enterprise, Easy Mesh

Business Scope

Wi-Fi Alliance Inter operability certification test
R&D test



Tel:021-50791141/42/43
Mail:service@ta-shanghai.com
Add:Building 3, No.145, Jintang Rd, Pudong
Shanghai

Building 2, Spring Block, Meishenghuigu
Innovation Park, No.83, Dabao Rd, Bao'an
District, Shenzhen, Guangdong

实验室简介

Eurofins TA安规实验室是具有CE、RCM、UKCA和CBTL等资质的专业检测认证实验室，覆盖电能源、功率能源、热能源、机械能源、声学防护、材料阻燃等安规测试项目。安规实验室拥有完善、高精度的测试设备，测试能力覆盖通信设备、信息技术设备、音视频设备、测量、控制和实验室用电气设备、医疗器械设备、工控类设备等领域，为客户提供专业的安全测试与咨询服务。

服务产品领域

移动终端设备: 手机、平板电脑、POS机、车载电脑、数据卡等
电信终端设备: 固定电话终端、无绳电话终端、集团电话、传真机、调制解调器(含卡)、移动用户终端、ISDN终端、数据终端(含卡)等
无线局域网设备: 无线AP、无线路由、无线网桥、数据终端等
多媒体设备: 计算机、复印机、打字机、扫描仪、现金出纳机、绘图仪等测量、控制和实验室用电气设备、医疗器械设备、工控类设备

测试设施

拥有环境、电气安全，机械性能、材料阻燃、电池性能、防尘防水检测等先进设备

测试能力

信息技术、电信安全: GB4943.1、EN 60950-1、IEC 60950-1、UL 60950-1、AS/NIS 60950.1
音视频设备: IEC/EN60065、UL60065、GB8898
多媒体设备: BS EN IEC62368-1、UL62368-1、AS/NZS62368-1、BS EN IEC 62368-3
测量、控制和实验室用电气设备: IEC 61010-1、EN 61010-1、BS EN61010-1
医疗器械设备: IEC 60601-1、EN 60601-1、BS EN 60601-1、AS/NZS IEC 60601.1、GB 9706.1
工控类设备: IEC 60730-1、EN 60730-1、BS EN 60730-1、GB/T14536.1
音频设备: EN 50332-1、IEC 50332-1、BS EN 50332-1、EN 50332-2、BS EN50332-2
环境测试: GB/T 2423.1、GB/T 2423.2、GB/T 2423.3、GB/T 2423.4、GB/T 2423.5、GB/T 2423.10、IEC 60068-2-1、IEC 60068-2-2、IEC 60068-2-3、IEC 60068-2-14、GB/T1354、ETSI EN 300 019-2-3、GB/T14710
JATE: Terminal equipment design certification

业务范围

音视频类设备、移动终端、无线局域网、IT设备、手机、测量、控制和实验室用电气设备、医疗器械等产品CE认证测试、RCM认证测试、UKCA认证测试、IT设备CCC预测试、电工电子产品环境测试、蓝牙、Wi-Fi产品的JATE认证。



您可信赖的合作伙伴!全球认证及测试服务供应商

电话: 021-50791141/42/43
邮箱: service@ta-shanghai.com
地址: 上海市浦东新区金唐路145号3幢

深圳办事处
广东省深圳市宝安区新安街道大宝路83号美生慧谷
创新园春谷2栋

Lab Introduction

Eurofins TA safety laboratory is a professional testing and certification laboratory with CE, RCM, UKCA and CBTL qualifications, covering safety testing items such as electric energy, power energy, thermal energy, mechanical energy, acoustic protection, and material flame. The laboratory has complete and high-precision testing equipment, and its testing capabilities cover communication equipment, information technology equipment, audio and video equipment, measurement, control and laboratory electrical equipment, medical equipment, industrial control equipment and other fields, providing customers with professional security testing and consulting services.

Tested Product

Mobile terminal equipment: mobile phone, tablet computer, POS machine, on-board computer, data card, etc.
Telecom terminal equipment: fixed telephone terminal, cordless telephone terminal, PBX, fax machine modem (including card), mobile user terminal, ISDN terminal, data Terminal (including card)
Wireless local area network equipment: wireless AP, wireless router, wireless bridge, data terminal
Multimedia equipment: computers, copiers, typewriters, scanners, cash registers, plotters and other measurement
Measurement, control and laboratory electrical equipment
Medical equipment
Industrial control equipment

Test System

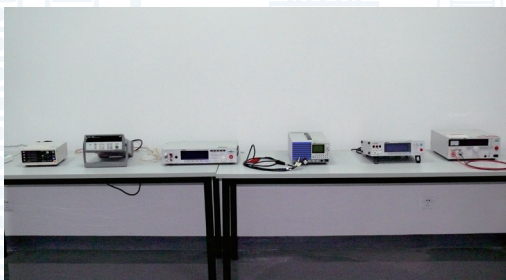
It has environmental, electrical safety, mechanical performance, material flame retardant, battery performance testing, IPxx and other advanced equipment

Test Ability

Information technology, telecommunication safety: GB4943.1, EN 60950-1, IEC 60950-1, UL 60950-1, AS/NIS 60950.1
Audio and video equipment: IEC/EN60065, UL60065, GB8898
Multimedia equipment: BS EN IEC62368-1, UL62368-1, AS/NZS62368-1, BS EN IEC 62368-3
Measurement, control and laboratory electrical equipment: IEC 61010-1, EN 61010-1, BS EN61010-1
Medical equipment: IEC 60601-1, EN 60601-1, BS EN 60601-1, AS/NZS IEC 60601.1, GB 9706.1
Industrial control equipment: IEC 60730-1, EN 60730-1, BS EN 60730-1, GB/T 14536.1
Audio equipment: EN 50332-1, IEC 50332-1, BS EN 50332-1, EN 50332-2, IEC 50332-2, 2423.5, GB/T 2423.10, IEC 60068-2-1, IEC 60068-2-2, IEC 60068-2-3, IEC 60068-2-14, GB/T1354, ETSI EN 300 019-2-3, GB/T14710
JATE: Terminal equipment design certification

Business Scope

Audio and video equipment, mobile terminals, wireless LAN, IT equipment, mobile phones, measurement, control and laboratory electrical equipment, medical equipment and other products CE certification testing, RCM certification testing, UKCA certification testing, IT equipment CCC pre-test, electrical and electronic product environmental testing, JATE certification for Bluetooth and Wi-Fi products.



Tel:021-50791141/42/43
Mail:service@ta-shanghai.com
Add:Building 3, No.145, Jintang Rd, Pudong
Shanghai

Building 2, Spring Block, Meishenghuigu
Innovation Park, No.83, Dabao Rd, Bao'an
District, Shenzhen, Guangdong

实验室简介

Eurofins TA拥有广泛的全球认可，高效的全球认证团队和网络，具有丰富的国际认证经验。可以根据各类国际和当地标准，为众多行业提供认证服务。为客户迅速进入国际市场提供一站式服务。

服务产品领域

移动终端设备：手机、平板电脑、POS机、车载导航、车载追踪器、键盘、模块、无线平板探测器（医疗类）、血糖仪（医疗类）等

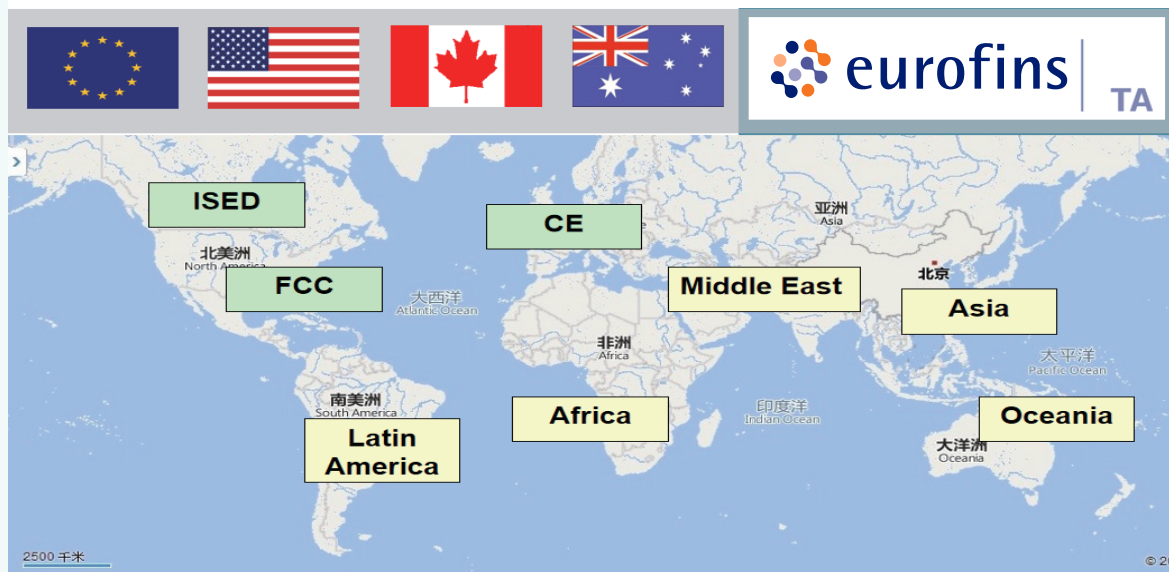
电信终端设备：固定电话终端、无绳电话终端、移动用户终端、ISDN终端、数据终端、多媒体终端设备、CPE等

无线局域网设备：无线AP、无线路由、无线网桥等

业务范围

全球两百多个国家 and 城市的市场准入：欧盟CE、北美FCC、加拿大ISED、英国UKCA、澳洲RCM、韩国KC、日本MIC-R/MIC-T/VCCI、香港OFCA、台湾NCC/BSMI、印尼和其他中东、非洲、拉美、亚太等。

Global Market Access Service



※ CE/FCC/ISED/UKCA/MIC部分欧陆集团有自己的发证机构。欧陆集团在中国台湾/韩国有授权实验室。



您可信赖的合作伙伴!全球认证及测试服务供应商

电话：021-50791141/42/43
邮箱：service@ta-shanghai.com
地址：上海市浦东新区金唐路145号3幢

深圳办事处
广东省深圳市宝安区新安街道大宝路83号美生慧谷
创新园春谷2栋

Global Market Access Service

Lab Introduction

Eurofins TA maintains extensive global acceptations and recognitions and rich experience for our testing and certification services from a single source for quick access to international markets. According to international and local standards, Eurofins TA lab provides the "one-stop" service.

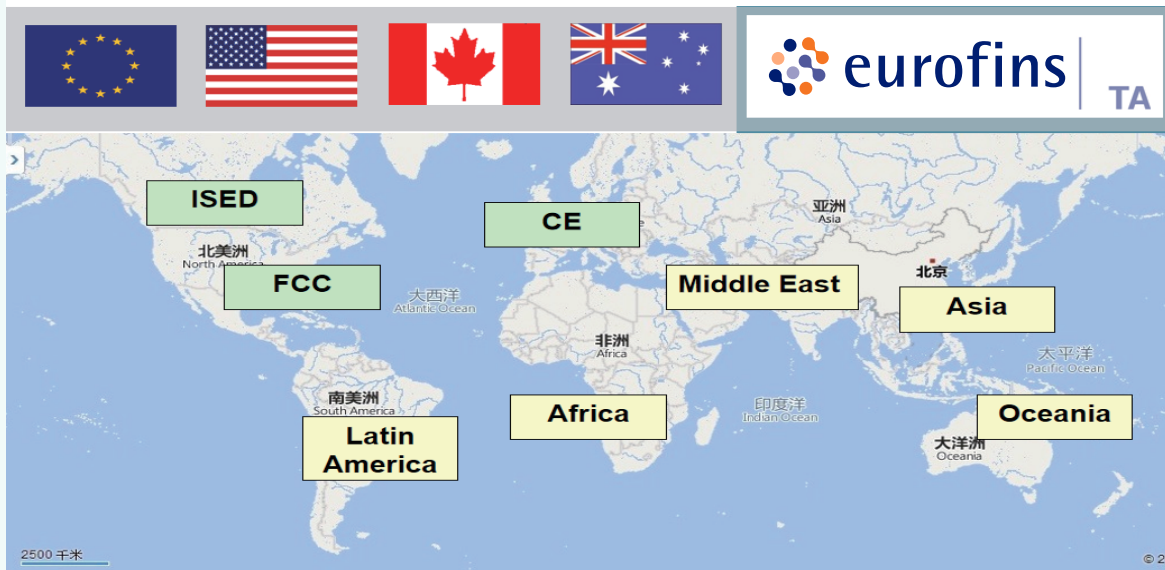
Tested Product

Telecommunication terminal equipment: fixed telephone terminal, cordless telephone, fax, keyboard, module, Wireless flat panel detector (Medical), blood glucose meter (medical), etc.
Information technology equipment: AV equipment, Automotive electronic equipment, and intellectual products, CPE, etc.
Wireless LAN equipment: wireless AP, wireless rout, wire bridge, etc.

Business Scope

The Worldwide Market Access of more than two hundreds countries:
CE for Europe, FCC for America, ISED for Canada, UKCA for United Kingdom, RCM for Australia, KC for Korea, MIC-R/MIC-T/VCCI for Japan, OFCA for Hong Kong, NCC/BSMI for Taiwan, Indonesia and other Middle East and Africa, Latin America, and Asia-Pacific, etc.

Global Market Access Service



※ Eurofins can issue the certificates of CE/FCC/ISED/UKCA/MIC etc.
Eurofins can provide local test in Korea and Taiwan, China.

 EU CE	 RUS GOST-R
 USA FCC	 EGY NTRA
 AUS RCM	 BRA ANATEL
 CAN IC	 HKG OFCA

Tel: 021-50791141/42/43
Mail: service@ta-shanghai.com
Add: Building 3, No.145, Jintang Rd, Pudong
Shanghai

Building 2, Spring Block, Meishenghuigu
Innovation Park, No.83, Dabao Rd, Bao'an
District, Shenzhen, Guangdong